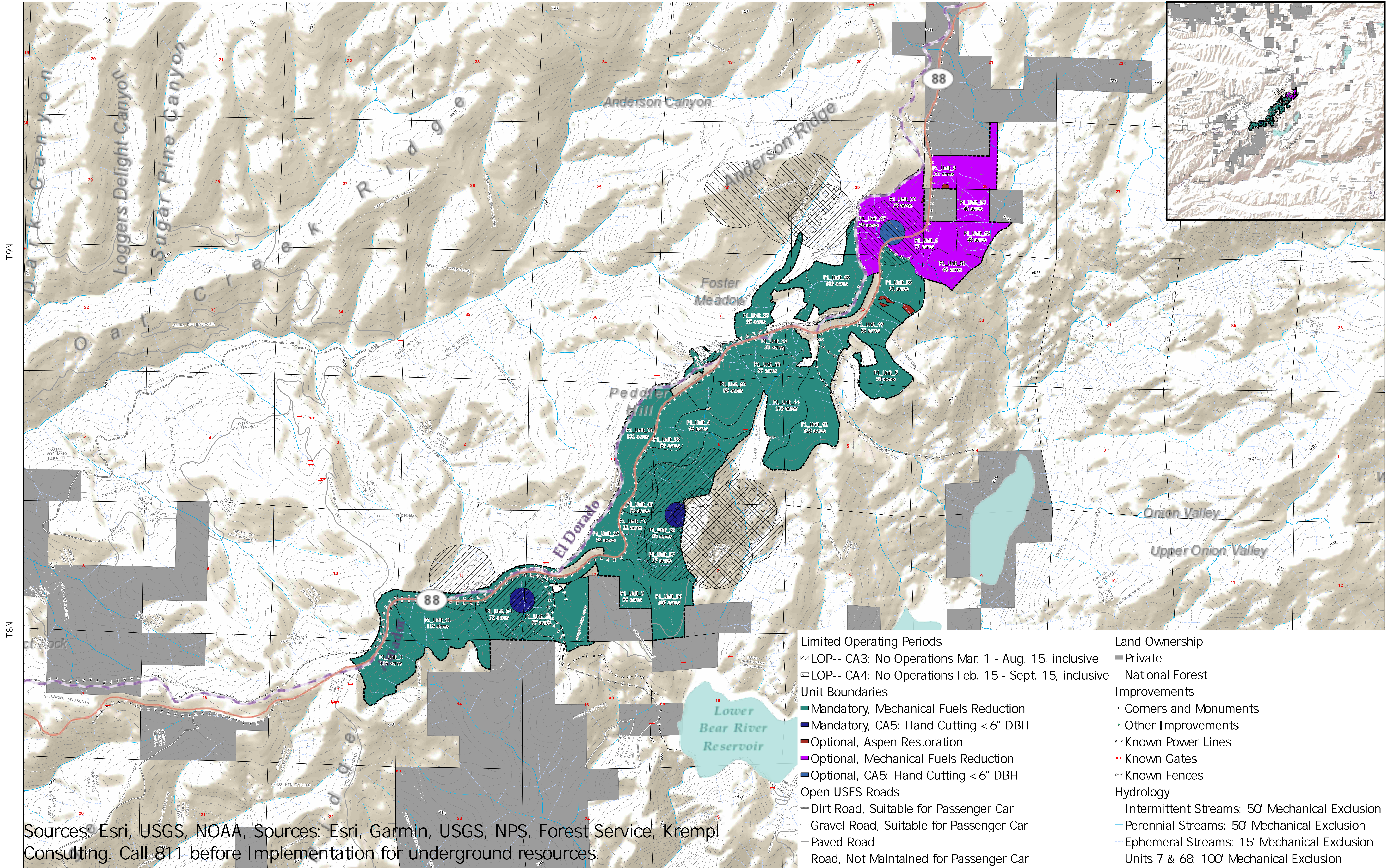


# Forest Projects Plan (Phase 1) Project Area Map

R15E

R16E



Sources: Esri, USGS, NOAA, Sources: Esri, Garmin, USGS, NPS, Forest Service, Krempl Consulting. Call 811 before Implementation for underground resources.

- |   |  |
|---|--|
| <p><b>Limited Operating Periods</b></p> <ul style="list-style-type: none"> <li>LOP-- CA3: No Operations Mar. 1 - Aug. 15, inclusive</li> <li>LOP-- CA4: No Operations Feb. 15 - Sept. 15, inclusive</li> </ul> <p><b>Unit Boundaries</b></p> <ul style="list-style-type: none"> <li>Mandatory, Mechanical Fuels Reduction</li> <li>Mandatory, CA5: Hand Cutting &lt; 6" DBH</li> <li>Optional, Aspen Restoration</li> <li>Optional, Mechanical Fuels Reduction</li> <li>Optional, CA5: Hand Cutting &lt; 6" DBH</li> </ul> <p><b>Open USFS Roads</b></p> <ul style="list-style-type: none"> <li>Dirt Road, Suitable for Passenger Car</li> <li>Gravel Road, Suitable for Passenger Car</li> <li>Paved Road</li> <li>Road, Not Maintained for Passenger Car</li> </ul> | <p><b>Land Ownership</b></p> <ul style="list-style-type: none"> <li>Private</li> <li>National Forest</li> </ul> <p><b>Improvements</b></p> <ul style="list-style-type: none"> <li>Corners and Monuments</li> <li>Other Improvements</li> </ul> <p><b>Known Power Lines</b></p> <ul style="list-style-type: none"> <li>Known Power Lines</li> </ul> <p><b>Known Gates</b></p> <ul style="list-style-type: none"> <li>Known Gates</li> </ul> <p><b>Known Fences</b></p> <ul style="list-style-type: none"> <li>Known Fences</li> </ul> <p><b>Hydrology</b></p> <ul style="list-style-type: none"> <li>Intermittent Streams: 50' Mechanical Exclusion</li> <li>Perennial Streams: 50' Mechanical Exclusion</li> <li>Ephemeral Streams: 15' Mechanical Exclusion</li> <li>Units 7 &amp; 68: 100' Mechanical Exclusion</li> </ul> |
|---|--|



1:15,000

0 0.5 1 2 Miles

